

LETTER FROM THE PRESIDENT – Kathy Jankowski

First of all, I want to thank Al Rae for the wonderful job he did as President for the past 4 years. I'll work to further improve the communications Al began between the property owners and the Town Council.

Many of you know, I have been the Treasurer for the past two (2) years. Ann Shanks will take over those responsibilities. "Thank you, Ann." This position gave me the opportunity to learn more about the work of the SBPOA Executive Board and our volunteers. It is amazing to me that we accomplish so much. With the leadership of George Junkin, our 1st Vice President, the Neighborhood Watch Program has been proactive in identifying potential problems, to keep our community safe and to minimize home owners' repair costs. With the leadership of Jack Whitney, our Water Quality committee has been providing the Town Council with valuable information to improve our water quality. We will miss Jack while he is taking a one-year "job-related" visit to Germany. And, we are fortunate to have Sue Callaway step in as our 2nd Vice President. Sue will not be leading the water quality effort, but we are looking forward to her leadership in other areas. Of course, as Secretary, Mary Suazo is keeping us all in line.

I don't want to go without mentioning that Sandi Roberts is doing an awesome job creating, promoting, and managing merchandise with our town logo; and we can always depend on Mike Matera to plan our yearly neighborhood yard sale.

I look forward to making our next summer's bull roast as successful as this year. Walt Laderer has been doing a great job in organizing this for the past several years. Approximately 200 people attended, and I was fortunate to talk with many of you.

There are many other good works to be done; however, my number one priority is to improve our communications to get more information to you in a more timely manner. This newsletter published by George Junkin provides a good deal of information on a quarterly basis, but honestly, George and I have been challenged in getting more timely information to you via email. I have already investigated an easier, economical solution. You will hear more about this soon.

I look forward to working with all of you. If you wish to contact me, please send an email to kathyj310@yahoo.com, call 539-8570 or stop by.

Have a wonderful summer!

Kathy Jankowski , 310 W. 4th Street

Membership in SBPOA – Membership in SBPOA has been about 770 over the last three years. Currently we have 738 who have signed up for '09/'10. E-mail addresses have been supplied by 582 members who will receive the newsletter and special notices by email. A total of 763 e-mails will be sent, since some people have supplied a second email address. Those without email and those who have e-mail and request a hard copy will still receive the newsletter and meeting announcements by US Mail. Special notices are usually not sent by US Mail. Currently we plan to send out 244 hard copies of the news letter by US Mail. Those with email addresses who would prefer a hard copy of the newsletter by US Mail should send their request to SBPOA2008@aol.com.

Notes From The Town Of South Bethany Canal Water Quality Committee

1. Oyster Gardening Report from Dr. Allan Allenspach, 302-539-7135

The oyster gardeners should be encouraged by the information that has been collected over the last year. They should also know that we will have a busy upcoming season, except that this year there will not be the systematic study by the graduate student from DE State University. The program will be run by EJ Chalabala and the CIB. I will continue to be the point person from the Bethany area. I am including some vital information from the previous work.

The value of the oyster floats

- Oysters grow very well in the baskets/oyster floats.
- The floats provide a beautiful habitat for a variety of species (eel, fish, shrimp, worms, crabs). Diversity is striking.
- There has been an increased awareness to the program throughout the state.
- The program should be considered a “water quality and habitat enhancement” program, not an “oyster restoration” project for the bays.

The number of gardeners grew from 45 in 2006 to 105 in 2008! The research study in Fenwick Island used 8 docks with 3 floats per dock. There were 49 species of fish and invertebrates collected in the study. 1,700 crabs of various species were counted. *Oddly, the site of the float appears to be more significant than the cleaning regimen.* (This helps explain the reason local gardeners wonder whether or not their oysters are thriving. Take heart, they are doing ok. Just keep them out of the muck). Frank Marengi defended his thesis which contained a very extensive study of the habitat and its conditions. His thesis was full of statistical analysis attempting to determine what to do next and where to place the baskets in the future. He did an outstanding job.

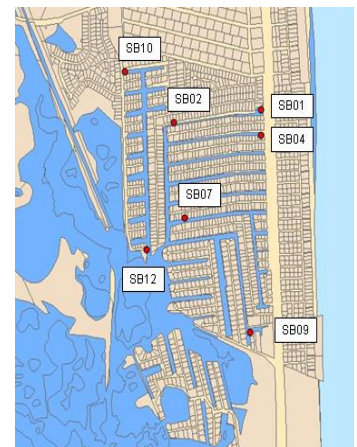
At some point the 2008 oysters will be removed to rip-rap in the Inland Bays (they will not be placed in reefs). New spat will be purchased from Rutgers University, cultured and ready by the end of June. The SBPOA contributed \$1K to the purchase of the spat. There will likely be no increase in gardeners this season.

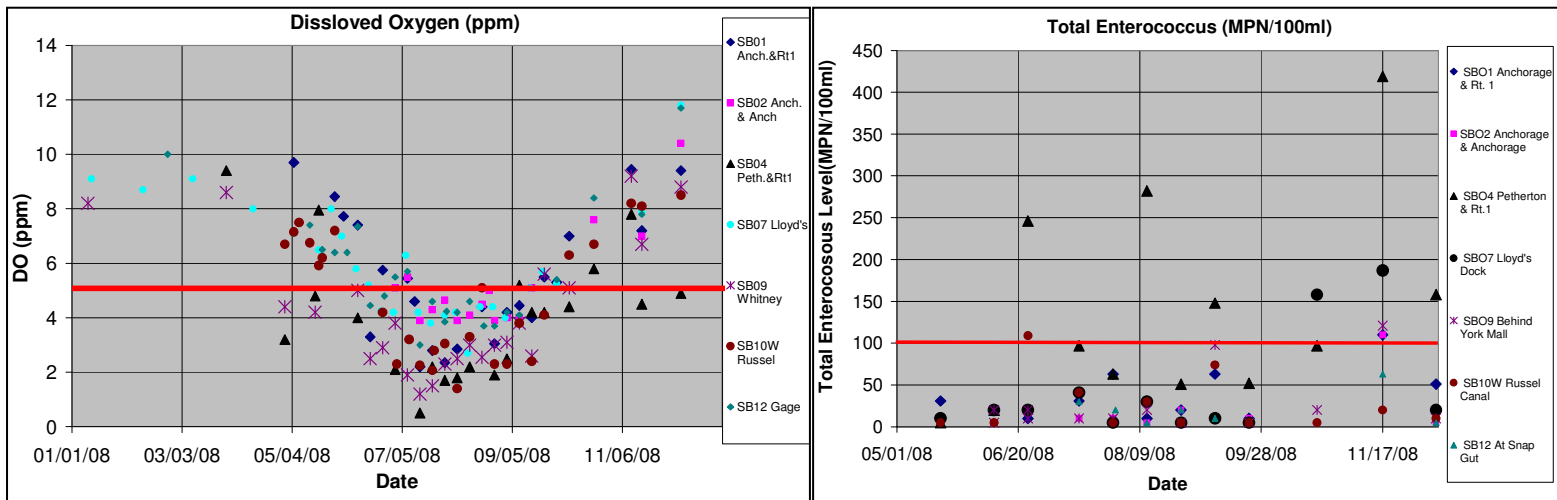
2. Water Quality Monitoring Program Report

In 2008, the Town of South Bethany instituted a volunteer water quality monitoring program with the assistance of the UD Citizen Monitoring Program. For more information on the program and to see the reports of data collected go to <http://citizen-monitoring.udel.edu/>. Seven sites were selected, see figure. (A new site has been added this year on the west end of Petherton, SB05.) The objectives were to provide baseline data as a step towards the long term goal of making the canals “fishable and swimmable”. Volunteers were trained and equipped to collect field data from their sites and to forward samples from all or selected sites to the CMP laboratory for further analysis.

This report summarizes the two most pertinent parameters in regards to the long term goals. Dissolved Oxygen (DO) conditions (in parts per million, ppm) have a bearing on the goal of “fishable”. Fish would like to see the readings higher than 5 ppm. Total Enterococcus Bacterial conditions (in total colonies per 100 ml) have a bearing on the goal of “swimmable”. For safe swimming the last measured reading should be less than 104 and the mean of the previous readings should be less than 35. See charts on the next page.

See http://www.noaa.gov/people/may2009_people_3.html for an article in the latest edition of NOAA World, where Derek Parks wrote "Citizen Scientists" in Delaware Sea Grant Program Work for Water Quality".





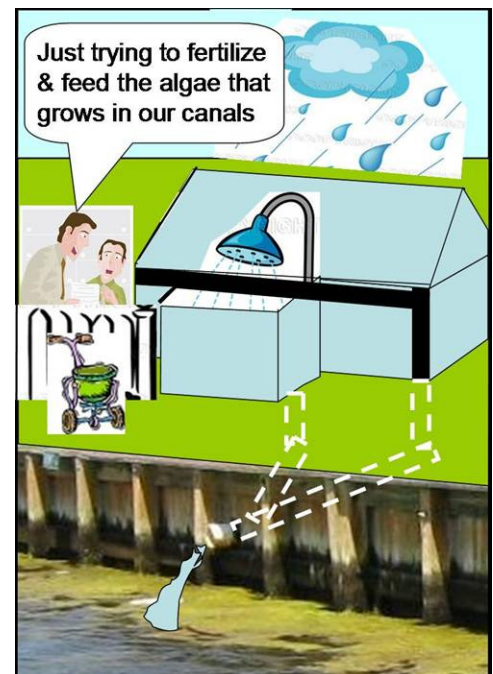
Fish do not like the dissolved oxygen in the summer. All the canals are bad, but Petheriton at route 1 is the worst. For total Enterococcus levels most of the canals are pretty good, most of the time. However, Petheriton at route 1 is again the worst.

3. Stormwater Runoff Issues

Ordinance No. 149-09 <http://southbethany.org/bboard.php>

On May 8, 2009, the town council adopted Ordinance No. 149-09. This ordinance requires that:

- New roof construction or repair that includes the installation of rain gutters and downspouts shall not allow the run-off-water to drain directly into any canal or body of water.
- Newly constructed outside showers shall not be allowed to drain within ten (10) feet of any canal or body of water. This does not prohibit the connection of an outside shower to the building wastewater drain, provided that such drain is protected to prevent the entrance of stormwater.
- Rain gutters, downspouts, and outdoor showers existing at the time of enactment of this subsection may be used and repaired as a Nonconforming Structure (§145-3) but shall not be expanded, rebuilt, or replaced except in compliance with this subsection where 50% or more of such structure requires repair (§145-17).



The Water Quality Committee urges citizens of South Bethany that have existing structures that are not currently in compliance with the above ordinance to **voluntarily** bring their structures into compliance.

Ordinance No. 150-09 to limit impervious surfaces in setback <http://southbethany.org/TCMeetings.php>

There was significant discussion on Ordinance 150-09, Chapter 145, Zoning, Article IV, Entitled "General Provisions" to add § 145-14.3, "Covering allowed in setback area" at the May 8, 2009 town council meeting. As a result of the discussions a motion was made by Councilman Fields, seconded by Councilman Headman, that the Council postpone the third reading of Ordinance 150-09 pending further review. The motion was adopted. (This ordinance is not currently listed on any meeting agenda.)

Anchorage Canal Drainage Assessment Project

In the last newsletter we reported that the Town of South Bethany, in conjunction with the Center for the Inland Bays and the DelDOT, has received a grant from the US Army Corps of Engineers for \$35,000. The objective of this grant is to assess retrofit opportunities to mitigate the stormwater impact from the 65 acre Anchorage Canal stormwater drainage area, which empties into the Anchorage Canal. The successful bidder for that contract was the team formed by the Center for Watershed Protection (CWP) and JMT Engineering. The first meeting for the study group was March 19, 2009 at the CIB. Councilman Jay Headman (chairman of the water quality committee), George Junkin (member of the water quality committee) and Melvin Cusick (Town Manager) represented South Bethany. Another South Bethany citizen attending was Ron Wuslich, chairman of the Citizens Advisory Committee for the CIB. There were also ten representatives from the CIB, DelDOT, U of D, CWP, JMT, KCI Technologies, Middlesex Home Owners, and Sea Colony Home Owners.

Chris Bason from the CIB presented an overview of the project and background on the bay and canals. There is a copy of this presentation at http://www.inlandbays.org/cib_pm/comments.php?id=465_0_17_0_CA. The CWP, JMT and KCI presented results from the first significant program task, the Storm Drain Inventory & Inspection and a map of the watershed with synthesized data layers. They presented charts of where all the stormwater comes from that enters the Anchorage Canal.

The next tasks are to:

- Select potential retrofit sites and perform field evaluations
- Prioritize a list of treatment practices with pounds of nitrogen & phosphorus reduced as well as costs to accomplish the reductions
- Develop five concept level retrofit designs
- Develop retrofit strategy and present final results and recommendations.

The final report and presentation of findings is scheduled for December, 2009.

4. Delaware Coast ~A~Syst, An Environmental Risk Assessment Guide For Protecting Coastal Water Quality prepared by Delaware Coastal Programs, Division of Soil and Water Conservation, DNREC.

This document contains valuable information that can be used by homeowners to protect and improve the quality of water in our canals. Pertinent chapters are:

- 2. Managing Stormwater on your property
- 5. Managing Hazardous Household Products
- 6. Home Landscaping Management
- 7. Caring For Your Boat & Dock

This document is available in the Town Hall for your review and can be accessed on the Town website, <http://www.southbethany.org/bboard.php> then click on [Delaware Coast-A-Syst \(An Environmental Risk-Assessment Guide for Protecting Coastal Water Quality\).pdf](#)

In future news letters we will pick a chapter to highlight. This news letter will highlight Chapter 7, specifically Boat Cleaning and Maintenance.

“By understanding the potential impacts of boating practices, you can ensure that the coastal waters we all depend on will not be damaged. This chapter examines boating-related activities and what you can do to minimize possible harm to the environment. Topics covered include:

- *Boat cleaning and maintenance*
- *Spill prevention and waste disposal*
- *Dock construction and maintenance*

By completing this chapter, you’ll learn to identify, evaluate, and reduce the pollution risks your boating practices may cause. Table 7.1 shows alternative cleaning products that are less toxic to the environment.”

Table 7.1—Alternatives to Toxic Products for Cleaning Your Boat

<i>Bleach</i>	<i>Borax or hydrogen peroxide</i>
<i>Detergent and Soap</i>	<i>Vegetable- or citrus-based soaps; plenty of elbow grease</i>
<i>Scouring Powder</i>	<i>Baking soda</i>
<i>Floor Cleaner</i>	<i>1 cup of white vinegar in 2 gallons of water</i>
<i>Window Cleaner</i>	<i>1 cup white vinegar in 1 quart of warm water, rinse and squeegee</i>
<i>General Cleanser</i>	<i>Bicarbonate of soda and vinegar; lemon juice combined with borax paste</i>
<i>Head Cleaner</i>	<i>Pour in baking soda and use a brush</i>
<i>Shower Cleaner</i>	<i>Wet surface, sprinkle on baking soda, and scrub with a scouring brush</i>
<i>Aluminum Cleaner</i>	<i>2 tablespoons cream of tartar in 1 quart of hot water</i>
<i>Brass Cleaner</i>	<i>Worcestershire sauce or paste made of equal parts salt, vinegar and water; rinse thoroughly</i>
<i>Copper Cleaner</i>	<i>Lemon juice and salt</i>
<i>Chrome Cleaner and Polish</i>	<i>Apple cider vinegar to clean; baby oil to polish</i>
<i>Fiberglass Stain Remover</i>	<i>Baking soda toothpaste</i>
<i>Drain Opener</i>	<i>Use boiling water and plumbers snake or disassemble; toxic substances should not be used in through-hull drain</i>
<i>Mildew Remover</i>	<i>Paste using equal parts of either lemon juice and salt or vinegar and salt</i>
<i>Wood Polish</i>	<i>Almond or olive oil (interior wood only)</i>

Taken from Managing Boat Wastes, University of Hawaii Sea Grant College Program

Use the table below to rate your risks related to the boat cleaning and maintenance practices you use. For each question, check your risk level in the right-hand column. Some choices may not be exactly like your situation, so choose the response that fits best. Refer to Table 7.1 above.

	LOW RISK	MEDIUM RISK	HIGH RISK	YOUR RISK
<i>Cleaning product use</i>	<i>I use only water to clean my hull and deck. I rinse the boat after every trip and use a lot of elbow grease instead of harsh cleansers.</i>	<i>I use only marine detergents or alternative cleaners to clean my hull and deck.</i>	<i>I use whatever cleaning agent is handy, regardless of whether it is meant for use in the marine environment. I never rinse my boat.</i>	<input type="radio"/> Low <input type="radio"/> Medium <input type="radio"/> High
<i>Cleaning location</i>	<i>I take my boat to a self-service car wash after each trip so my runoff will be collected and treated or recycled.</i>	<i>I pull my boat trailer into the yard when I wash it off so most of the runoff will percolate into the soil.</i>	<i>I wash my boat in the street or in my driveway where my runoff will find its way into a nearby surface water body.</i>	<input type="radio"/> Low <input type="radio"/> Medium <input type="radio"/> High
<i>Hull maintenance</i>	<i>I take my boat to a licensed boatyard when the hull needs painting or scraping.</i>	<i>I take on small or moderate painting and scraping jobs at my house. I use a tarp under the boat to catch debris. I use a containment bag and properly dispose of or recycle waste.</i>	<i>I never follow label instructions and take no precautions—even when recommended. I don't use drip pans or recycle leftover products.</i>	<input type="radio"/> Low <input type="radio"/> Medium <input type="radio"/> High
<i>Nuisance species</i>	<i>After each boating trip, I always check the hull, engine, and trailer for vegetation that may have become attached. I never take my boat from one water body to another in the same week.</i>	<i>If I see any plants hanging off my boat or trailer, I'll remove them. Occasionally I use my boat in different water bodies, but I always let it dry out for several days.</i>	<i>I never check my boat or trailer for plant fragments. There are times I will trailer my boat from one water body to another in the day.</i>	<input type="radio"/> Low <input type="radio"/> Medium <input type="radio"/> High
<i>Nuisance species</i>	<i>I always check my live well and bilge water for the presence of exotic species, completely emptying and rinsing the basin after each trip. I never transfer live bait from one location to another.</i>	<i>I always empty the live well after each trip, but I do not rinse it out.</i>	<i>I never check my live well for the presence of nuisance species. I frequently transfer live bait from one location to another.</i>	<input type="radio"/> Low <input type="radio"/> Medium <input type="radio"/> High
<i>Wood and trim Maintenance</i>	<i>I use covers for my exposed wooden components. I enjoy the look of weathered wood and use only salt water to rinse away the dirt and grime.</i>	<i>I use wood cleaners and soaps sparingly, avoiding solvents and varnishes. If I must use a cleaner I apply with a sponge or soft cloth.</i>	<i>I frequently use harsh wood cleaners and varnishes. I also use steel wool to prepare the wood surface for application. I rinse my tools in the water after I finish.</i>	<input type="radio"/> Low <input type="radio"/> Medium <input type="radio"/> High
<i>Engine Maintenance</i>	<i>I always keep my engine finely tuned. I use only cleaner-burning TC-W3 oil mixed to the correct ratio. I always capture and recycle my used oil.</i>	<i>I tune up my engine every couple of years. I use whatever oil is on sale, recycling when it's convenient.</i>	<i>I never tune up my engine. I use the cheapest oil available. I mix my oil to burn rich because I've been told that will make my engine last longer.</i>	<input type="radio"/> Low <input type="radio"/> Medium <input type="radio"/> High

THEY'RE BACK!!!!!!

Are you driving around with a car decal that incorrectly identifies our town as SBB? Does your SB car decal include free advertising for one of our local merchants? Worse yet, is the SB decal missing from your vehicle's bumper or rear window?? Then you'll be happy to know that SB decals are back!! Call Sandi Roberts at 537-5371 to get yours. The cost per decal is \$2.50 (cash only, please).



Treasurer's Report - Kathy Jankowski		
Balance 2/28/2009	\$30,061	
INCOME		
Bull Roast Tickets		\$260
Interest Income		\$33
Membership Dues		\$14,755
TOTAL INCOME	\$15,048	
EXPENSES		
Bank Transaction Fee		\$51
Bull Roast		
Food		\$5,163
Name Tags		\$12
Setup/Take Down		\$300
TOTAL Bull Roast		\$5,475
Charity--Bethany Beach Parade		\$100
Neighborhood Watch		\$2,878
Newsletter		\$1,591
South Bethany Apparel		\$1,233
Taxes		\$655
Town Meeting Refreshments		\$75
TOTAL EXPENSES	\$12,057	
Balance 6/15/2009	\$33,051	

SBPOA DATES FOR 2009 - 2010

(Fiscal Year 6-1-09 to 5-31-10)

DATE	Weekday	TIME	EVENT
June 26, 2009	Friday		Publish Summer Shore Lines
Aug 26, 2009	Wednesday	10:00AM	Neighborhood Watch Kickoff Meeting SBPOA Membership Meeting (#2)
Aug 29, 30 & 31	Sat. Sun. Mon		Labor Day weekend – Distribute Watch material
September 18, 2009	Friday		Publish Fall Shore Lines
December 9, 2009	Wednesday	Noon	Neighborhood Watch Luncheon
December 18, 2009	Friday		Publish Winter Shore Lines
February 27, 2010	Saturday	10:00 AM	SBPOA Membership Meeting (#3) ➤ Establish the dues for the following year. ➤ Appoint Nominating Committee
March 26, 2010	Friday		Publish Spring Shore Lines
April 17, 2010	Saturday	10:00 AM	SBPOA Membership Meeting (#4) ➤ Meet the Town Election Candidates ➤ President's Report & Adopt Annual Budget
May 5, 2010	Wednesday	6:30 PM	Neighborhood Watch Thank You Dinner
May 2010			Bulk Trash Pick-Up
May 22, 2010	Saturday	All Day	SBPOA Yard Sale
May 22, 2010	Saturday	Till 7:00 P	Town Election
June 5, 2009	Saturday	4:00 PM	Bull Roast - Membership Meeting (#1) ➤ Nomination and Election of Officers ➤ Deadline for SBPOA membership sign-up
June 25, 2009	Friday		Publish Summer Shore Lines

2008/09 Telephone Directory & Buyers Guide

We still have many copies of the 2008/09 Telephone Directory & Buyers Guide. They are available from SBPOA officers and at the Town Hall. The guide is designed to provide a wealth of reference & buying information to residents & visitors to the area. The book is not possible without the financial support of the advertisers. When you support them please mention that you saw their ad in the SBPOA book. Please make sure that a copy of the guide stays in your beach house so that all who visit can take advantage of the information contained in it.

2009 Bull Roast a Big Success – The bull roast this year was catered by Bethany Blues, a local vendor who advertised in our *Telephone Directory & Buyers Guide*. We had approximately 210 people, representing 85 properties, including members and guests, who enjoyed the festivities. We want to thank The Bull Roast Chairman, Walt Laderer, and all his team for doing such a fine job.

The Coastal Point has many good articles of interest to South Bethany. Follow the links

UPDATED: South Bethany proposes smaller tax increase

http://bethanybeachnews.com/content/updated_south_bethany_proposes_smaller_tax_increase

Saxton, Youngs and Headman elected in South Bethany

http://bethanybeachnews.com/content/breaking_news_saxton_youngs_headman_win_south_bethany

http://bethanybeachnews.com/content/saxton_youngs_and_headman_elected_south_bethany

South Bethany considers run-off ordinances

http://bethanybeachnews.com/content/south_bethany_considers_runoff_ordinances

South Bethany's Cusick named Delaware's Town Manager of the Year

http://bethanybeachnews.com/content/south_bethanys_cusick_named_delawares_town_manager_year

South Bethany considers Mediacom's cable franchise

http://bethanybeachnews.com/content/south_bethany_considers_mediacom_s_cable_franchise

Update On Beach Health, Dune Crossings and Beach Access

The beach is wide and beautiful. It suffered no damage over the winter. During the spring the Town made the dune crossing a lot less steep, raising the low spot by at least 4 feet, and installed beach rule signs that are significantly more pleasing to the eye than the previous signs.



BEACH RULES:
LIFEGUARDS ARE ON DUTY FROM
MEMORIAL DAY TO LABOR DAY
10:00 A.M. TO 5:00 P.M.
(5:30 P.M. ON WEEKENDS)

- NO DOGS - MAY 15 TO OCTOBER 15
- NO FISHING / SURFING WHILE LIFEGUARDS ARE ON DUTY
- NO SLEEPING - 11:00 P.M. TO 8:00 A.M.
- NO LITTERING - GLASS CONTAINERS, VEHICLES
- NO LAUNCHING / BEACHING / SWIMMING TO OR FROM WATERCRAFT WHILE LIFEGUARDS ARE ON DUTY
- NO INNER TUBES / PLASTIC RINGS / LIFE JACKETS WHILE LIFEGUARDS ARE ON DUTY
- ASK LIFEGUARDS FOR PERMISSION TO PLAY BALL
- NO PARTIES (WITHOUT PERMIT) AND NO FIRES
- FIREWORKS OF ALL KINDS ARE PROHIBITED
- HOLES DUG IN THE SAND ARE TO BE FILLED BEFORE LEAVING THE BEACH

HANDICAP ACCESSIBLE RAMP AT SOUTH 3RD STREET

There have been questions concerning Trash Collection in South Bethany – for clarification the following is from the Town web site: “TRASH COLLECTION”:

- April, May & September—Monday and Saturday
- June, July & August—Monday, Thursday, and Saturday
- October to March—Monday

NOTE:

- Use appropriate containers to prevent garbage from being strewn about by wind/birds/animals.
- Brush/tree trimmings, etc. should be tied in bundles less than 30 lbs. and no longer than 4 ft.
- Oceanfront home trash bin/containers should be removed during off season and severe storms.
- To ensure the pick up of everyday trash, bags should be put out the night before pick-up day.
- Bulk Trash Pick-Up Day is scheduled annually in May

Recycling Program (Provided By DSWA) Sign up for recycling on the Town’s website, http://southbethany.org/recycle_form.html , or at Town Hall. The recycling program is single stream – all recyclables are collected in one container.

- Paper & Junk Mail – Newspapers, phonebooks, office paper, flyers, catalogs, magazines
- Cardboard & Paperboard – Corrugated appliance & storage boxes, cereal boxes & tissue boxes
- Plastic Bottles – Milk jugs, soda, detergent & shampoo bottles, plastic bags
- Cans – aluminum & steel, empty aerosol cans, food, beverage, & pet food cans
- Glass – Clear, green & brown containers

Recyclables are collected on Fridays: **If there is a holiday in the week, then collection is on Saturday.**

- May, June, July, August & September – Every Friday
- October, November, December, January, February, March & April -- Only the 1st & 3rd Friday

Address

Shore Lines
SBPOA2008@aol.com
P.O. Box 631
Bethany Beach, DE 19930